

# SCIENCE ON THE GO

FALL 2025  
SPRING 2026



Science on the Go is a professional development program designed for K–8 educators who strive to build inspired science learning communities using effective instructional practices, through the use of **NGSS-aligned, hands-on, inquiry-based lessons that incorporate collaborative problem solving**. For more than 30 years, our experienced education staff has been working side-by-side with teachers to leverage locally relevant science experiences in classrooms throughout Chicago.

## with **science on the go**, you'll invest in:



One Professional Development  
afterschool workshop to prepare for  
classroom implementation;

### **EARN**

Up to six and a half  
professional development  
clock hours.



Nine lessons that explore local science content  
through NGSS-aligned curricula with all  
materials and documents provided

### **INCLUDING**

Three lessons—taught by a museum  
educator—that **model best practices** in  
science education and utilize **unique museum  
resources** from our living and preserved  
collections.

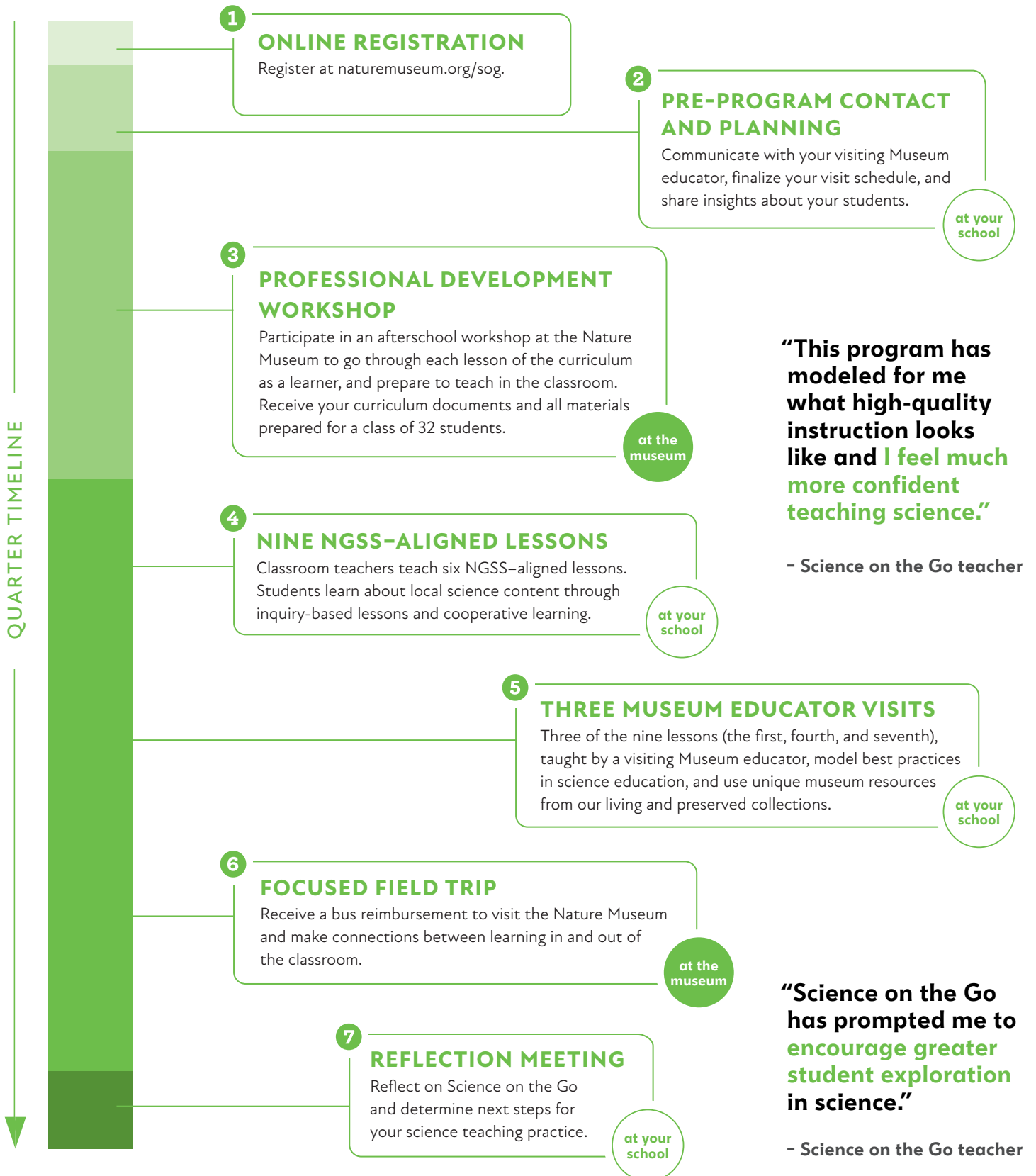


Focused Field Trip to connect  
classroom inquiry to  
community experiences

### **INCLUDING**

A **bus reimbursement**  
to the Nature Museum.

# SCIENCE ON THE GO TIMELINE



# SCIENCE ON THE GO CHOOSE YOUR CURRICULUM

	K	1	2	3	4	5	6-8
<b>S1</b> 10/21 - 12/12	Milkweed Marvels						
		Nature's Nurters					
		Perplexing Plants		Wood Frog Wonders			
					Woodland Breakdown		
							Engineering Ecosystems
<b>S2</b> 1/13 - 2/27	Trees Near Me						
		Making Sense of Butterflies					
		Nature's Nurters					
				Conservation on Location			
				Wood Frog Wonders			Biodiversity Disrupted
<b>S3</b> 4/7 - 5/22							Climate Change in Chicago
	Milkweed Marvels						
		Perplexing Plants					
				Chicago Bird Watchers			
					Woodland Breakdown		
							Plants, Matter, Energy!
							Engineering Ecosystems

Register online at: [naturemuseum.org/sog](https://naturemuseum.org/sog)

**S1** October 21 - December 12, 2025 | Registration Deadline: [October 10, 2025](#)

**S2** January 13 - February 27, 2026 | Registration Deadline: [January 6, 2026](#)

**S3** April 7 - May 22, 2026 | Registration Deadline: [March 27, 2026](#)

# SCIENCE ON THE GO CURRICULUM DESCRIPTIONS

GRADES **K 1 2**

## Milkweed Marvels **K 1**

NGSS: K-LS1-1, 1-LS1-1

Explore how milkweed and all the things that live on and around it get what they need in the city. Study the ways these organisms use their structures to survive, and use them as inspiration to design solutions to our everyday problems.

## Trees Near Me **K 1**

NGSS: K-ESS2-2, K-ESS3-3, 1-LS1-1

Explore the ways trees around us affect their surroundings and change over time. Discover how other living things use structures and senses as they interact with the trees.

## Making Sense of Butterflies **1 2**

NGSS: 1-LS1-1, 1-LS1-2, 2-LS4-1

Investigate the ways butterflies find out about the world around them. Explore the unique ways each species responds to the information they collect to increase their chances of survival.

## Nature's Nurturers **1 2**

NGSS: 1-LS1-2, 2-LS4-1, 2-ESS2-3

Wait, ducks don't belong in trees! Uncover the ways that wood ducks, and other animals in and around local aquatic habitats, help their offspring survive.

## Perplexing Plants **1 2**

NGSS: 1-LS1-1, 1-LS1-2, 2-LS4-1

What is this plant and how did it get here? Explore plants, what they need to survive in one place, and how they might get to a new location

GRADES **3 4 5**

## Chicago Bird Watchers **3 4**

NGSS: 3-LS4-3, 3-LS4-4, 4-ESS2-1

Investigate how populations of common (and uncommon) birds vary across the city of Chicago. Gather evidence about the ways species respond to changes in local habitats.

## Wood Frog Wonders **3 4**

NGSS: 3-LS4-3, 3-LS3-2, 4-LS1-1

Frogs can freeze? Explore the unique adaptations that wood frogs use to survive Chicago's harsh winter. Investigate the ways that this survival strategy sets wood frogs up for success.

## Conservation on Location **3 4 5**

NGSS: 3-LS1-1, (3-LS4-4), 4-LS1-2, 5-ESS3-1

Join conservation scientists at the Nature Museum as they monitor endangered species, work to improve local ecosystems, and increase these animals' chances of survival.

## Woodland Breakdown **4 5**

NGSS: 4-LS1-2, 5-LS2-1, 5-PS3-1

What's happening in the woodland? Explore how organisms of all sizes, from fungi to frogs, get the matter and energy they need for survival.

GRADES **6-8**

## Biodiversity Disrupted **6-8**

NGSS: MS-LS2-1, MS-LS2-4, MS-ESS3-3

How can we tell if an ecosystem is healthy? Explore the work of conservation scientists at the Nature Museum and evaluate the impacts of human activities on Chicago's woodland biodiversity.

## Climate Change in Chicago **6-8**

NGSS: MS-LS2-2, MS-ESS3-4, MS-ESS3-5

How are local species affected by climate change? Students will construct an explanation about the cause of a changing climate and its effect on biodiversity in the Chicagoland area.

## Engineering Ecosystems **6-8**

NGSS: MS-LS2-3, MS-LS2-5

Beavers are said to be engineers of ecosystems, but what do they create? Model the ways that matter and energy flow through wetland ecosystems to explore biodiversity and resilience, and the services they provide.

## Plants, Matter, Energy! **6-8**

NGSS: MS-LS1-4, MS-LS1-5, MS-LS1-6

Investigate the complex role of plants in their ecosystems. Explore the interactions that sustain both plants and animals, and the process plants use to cycle energy and matter in to their environments.

Register online at: [naturemuseum.org/sog](https://naturemuseum.org/sog)

**S1** October 21 - December 12, 2025 | Registration Deadline: **October 10, 2025**

**S2** January 13 - February 27, 2026 | Registration Deadline: **January 6, 2026**

**S3** April 7 - May 22, 2026 | Registration Deadline: **March 27, 2025**